



# Over the Garden Gate

News & Notes for the Members of  
Lake Wissota Garden Club

April 2024

Editors: Pegg Sprague, Jean Wysocky

**Next Meeting:** Thursday, April 11, 2024

**Time:** 6:30 p.m.

**Place:** Lafayette Town Hall, 5765 197th St., Chippewa Falls, WI

**Program:** African Violets- Persnickety Houseplants

**Presenter:** Presentation by member participation

**Hostesses:** Debbie Roshell, Jeanne Wright, Lyn Wondra



We will share tips, tricks, problems and solutions for a favorite houseplant. Each member will pot up a rooted leaf cutting from a selection of different violets. It will be a color surprise when your new baby plant blooms for the first time.



## President's Message by Kristen Brown

Happy Spring, Everyone! That vernal equinox came and went so it is official. We Wisconsinites seldom count on the weather to be in synch with astronomical seasons. I was halfway expecting my asparagus and garlic plants to start peeking out before we got the thick wet blanket of snow to bring them back to their senses. As much as I enjoy garden work, I really appreciate the break we get between growing seasons. The best part is the anticipation! (It is fun and requires no energy expenditure on my part.) I'm glad to be firmly plopped back into anticipation mode for a few more weeks.

I attended a talk last week (virtually) by Robin Wall-Kimmerer, the author of "Braiding Sweetgrass". She is a well-known biologist and Native American who is excellent at bridging the gap between Indian ancestral knowledge and modern scientific knowledge. I was struck by a concept I want to share with you. The European/American mindset qualifies things like land, water, forests, game animals, etc., as "natural resources". There is an underlying understanding that resources are to be used. However, the Indian perspective is that these things are "gifts". Receiving a gift generates feelings of gratitude. We would feel inclined to give back. We might also feel inclined not to take too much. The Indian cultural perspective is more of a partnership with Earth than mastering Earth. Food for thought. --- Kristen



### Reminders!

- \* LWGC dues are due to Jenn Rogalski. Bring your \$25 cash or check to the April meeting or mail to Jenn.
- \* LWGC is hosting the St. Croix District Meeting on June 4. Fill out the registration form (in this newsletter) and give it and your check to Debbie Roshell at the next meeting.



Happy April Birthday  
Janeen, Rosemary, Kristen,  
and Muriel!

## Growing Connections — submitted by Linda Bergen

Growing Connections met at the Chippewa Falls Public Library on March 28 with the theme of houseplants. We talked about a variety of houseplants with Lois Koziol bringing an African violet and an aloe vera to talk about. Carla talked about spider plants. Others talked about houseplants they had.

Participants enhanced a flower pot by dabbing on paint with a sponge. While their flower pots dried, they created a fairy wand to include in their pot. Lastly they planted a spider plant in their decorated pot and completed it by adding their fairy wand.

Everyone was happy, proud, and excited about their completed project and are looking forward to next month when we learn how to make terrariums. Linda Bergen, Lois Koziol, and Rosemary Haley worked with participants.

# Amendment to LWGC Bylaws

The LWGC Bylaws Committee and the Executive Committee recommend the adoption of the following bylaw. Per LWGC bylaws, an amendment requires the change be “submitted in writing at the previous regular meeting.”

An explanation of this change and an explanation of the new Standing Rules will be provided at the April meeting with plans to vote on this amendment at the May meeting.

Please review the following information and bring your questions and comments to the April meeting.

## Current Bylaw

### ARTICLE IV-DUES

#### Section 1

The fiscal year shall begin on June 1 and end on May 31 in each year.

#### Section 2

Dues shall be a total of twenty-five dollars (\$25.00) per year. This includes dues to NGC, WGCF, St. Croix District, and LWGC. Summer friends shall pay annual dues of \$10.00.

#### Section 3

Dues shall be paid at/or prior to the April meeting.

#### Section 4

The treasurer shall notify, in writing, those members who have not paid their dues by May 15. Their name shall be dropped from the membership roll on July 1, after having been duly notified.

#### Section 5

Full membership dues shall include an annual subscription to and Wisconsin Gardens and The National Gardener.

## Proposed Bylaw

### ARTICLE IV-DUES

#### Section 1

The fiscal year shall begin on June 1 and end on May 31 in each year.

#### Section 2

Current members shall pay full dues on an annual basis. A new member will pay prorated dues. Dues amounts are as indicated in LWGC Standing Rules.

## New STANDING RULES

### Dues

- a. Current members shall pay full annual dues of \$25.00 (twenty-five dollars) to secure membership for the next fiscal year
- b. Deadline for dues payment will be specified by the LWGC Treasurer in order to get dues payment to St. Croix District and WGCF by their deadlines.
- c. Sometime prior to the dues deadline, the LWGC Treasurer will make an attempt to contact those members who have not paid dues in order to confirm their membership intentions.
- d. Full dues payment includes membership in NGC, WGCF, St. Croix District, and LWGC.
- e. New members joining in the months of June through November shall pay full dues.
- f. New members joining in the months of December through February shall pay one half (1/2) the annual dues amount.
- g. New members joining in the months of March, April, or May will pay full dues which will be applied to the next fiscal year.

## Changes and Rationale:

Section 1. No change

Section 2.

Dues amount addressed in Standing Rules.

Membership in NGC, WGCF, and St. Croix addressed in Standing Rules.

The summer friends membership has been deleted.

Differentiate between current members and and new members who are joining throughout the year.

Allow for prorated dues which are defined in Standing Rules.

Section 3.

Removed. Added to Standing Rules. Treasurer with determine due date.

Section 4.

Removed. Added to Standing Rules. Treasurer will have discretion how to contact members who have not yet paid — mailed letter, email, phone call, in person, etc.

Section 5.

Removed. Both publications are now emailed. Can be added in Standing Rules if needed.

## Rationale for Standing Rules

a. Won't have to change/amend bylaw when dues change.

b. St. Croix District and WGCF due dates do not correspond with each other. WGCF has changed its due date the past two years..

c. Treasurer will have discretion how to make contact. No date specified due to changing WGCF deadline.

d. Addresses information removed from original Section 2.

e. Used six months as cutoff for paying full dues.

f. Prorated dues to be more fair to members joining mid-year.

g. Decided on March, April, and May to apply dues to next fiscal year because those months are when dues are requested from current members.

## Calendar of Events

April 11 — LWGC Meeting, 6:30 p.m.

April 22 — Earth Day

April 26 — Arbor Day

May 9 — LWGC Meeting, 6:30 p.m.

May 19-21, 2024 - WGCF Annual Convention, Waukesha, WI

June 2-5, 2024 - NGC Convention, Denver, CO

June 4 — St. Croix District Meeting, Irvine Park, Chippewa Falls

# Spring District Meeting hosted by LWGC!

I need everyone to mark their calendars for Tuesday, June 4th. This is the date of the St. Croix District Meeting, which our club is hosting. We are planning an entertaining day at the Irvine Park pavilion. This is a club event and I am looking for volunteers for various jobs.

1. We are having welcome coffee and snacks. We need cookies, bars, or muffins for 30-40 people.
2. We are looking for any colorful flowery tablecloths for 6 ft tables.
3. Finally, we have our Ways and Means table. We would appreciate members bringing something garden related to sell for \$1 to \$10. Great items would be seeds, plants, garden tools, garden art, garden signs, and books. The money collected from this sale is used by the St Croix District. So while you are doing your spring cleaning, see if you have anything you could bring.

I will be talking about this at our next club meeting. New members please talk to me if you have any questions.

Sharon Lay, St. Croix District Meeting Chairperson

**Note: Registration form for the District Meeting is on the next page.**

## Get Your Hands Dirty in Preparation for the June District Meeting!

Our District Meeting Committee met last week to map out the day's schedule, menu, activity, and, most importantly, how our own members can get involved and help out.

1) Making hypertufa pots for all attendees --- I will have two workshops at my house in early May. (Tentatively Thursday, May 2 and Monday, May 6 from 1:00 to 4:00) I have all the materials. The pots will dry and cure at my house. (I like creative messes.)

2) Propagating small succulents --- We are keeping costs down by asking members to snip and root succulents at home to share at the meeting. We hope to have a good variety to create our mini hypertufa succulent gardens.

Our club members are experts in demonstrating the old adage "Many hands make light work." Those of us who find ourselves in leadership roles are VERY GRATEFUL!!! Thank you, ladies, for your cheerful participation.

Kristen





# St Croix District Spring Meeting

## Tuesday, June 4, 2024

Hosted by the Lake Wissota Garden Club  
Irvine Park Activity Bldg across from the Duck Pond  
125 Bridgewater Ave  
Chippewa Falls, Wisconsin

### Agenda

10:00 am - 3:00 pm

(Check-in begins at 9:30)

\$12.00/person includes

Morning Refreshments/Lunch/Hypertufa succulent pot

10:00 am – 11:30 District Meeting

11:45 - 12:30 Lunch

### Program

“Some Like it Hot”

Hypertufa Pots with succulent plants

12:45- 3:00 pm or sooner



Each person will go home with a Hypertufa pot. LWGC will provide succulent plants and Hypertufa pot (premade with soil added). You will add succulents of your choice during the program.

If time permits, take a stroll through the Irvine Park Native Wildflower Sanctuary which is located across the street. A project of the Lake Wissota Garden Club.

### Registration Deadline: May 27, 2024

Registration forms and payment can be sent to:

Lake Wissota Garden Club  
5871 189th St  
Chippewa Falls WI 54729-6803

Please remember to bring items (plants, garden art, garden books etc.) to donate to the Ways & Means table. These donations are sold to raise funds for the district.

Registration Form (**PLEASE CLIP AND RETURN TO ADDRESS ABOVE WITH PAYMENT**)

Make checks payable to LAKE WISSOTA GARDEN CLUB

Name \_\_\_\_\_

Email \_\_\_\_\_

Club Affiliation \_\_\_\_\_

Payment (Enclosed) \_\_\_\_\_

## IRVINE PARK NATIVE WILDFLOWER SANCTUARY

Georgia State University's Perimeter College in Decatur, GA houses the three acre "Ferns of the World" garden. Planted in 1990, this fernery is botany professor George Sanko's lifetime fern collection and is said to contain the most extensive collection of fern species in the US.

Our Sanctuary's 2024 fernery project's intent is not to amass a large collection of many fern species like the Decatur, GA garden but rather to demonstrate 10-12 WI native fern species that can be successfully grown in our region.

Our early March rainy day stop in Georgia did, however, provide some good design ideas to possibly incorporate in our project. A large pile of stones dumped many years ago by a highway crew, provides an attractive landscape feature and the curved walking paths laid out by Dr. Sanko draw the visitor's eye down the paths and through their fern garden.

Last fall, Sanctuary members designed and laid out a curving path through our proposed fernery. We also will interplant some of our most successful deep shade bloomers in our fernery. Now all we need is a truckload of lovely, large boulders.

Season opener...Our members will meet Apr. 3rd at 9:30 AM for our 1st workday of the season. To minimize trampling natives, we try to do clean-up before too many plants start sprouting.

You're invited...at 9:30 AM on Wed., April 3rd, we start each workday with a short tour to see everything that's growing and in bloom. You're all welcome to come for this 20 min. nature walk. You can stay after that or feel free to go on to the rest of your day's activities.

TENTATIVE 2024 WORKDAYS - you are welcome to come tour on any of our "every other Wednesday" workday tours. There are new species blooming every two weeks. We start at 9:30AM until the weather gets hot, then we convene at 9:00 AM. Workdays:

Apr. 3 & 17--May 1,15,29--June 12 & 26--July 10 & 24--Aug. 7 & 21--Sept. 4 & 18--Oct. 2 & 16

Ginger Wierman, IPNWS Chairman



Ferns of the world sign



Nice natural garden seat



Rock mound landscape feature



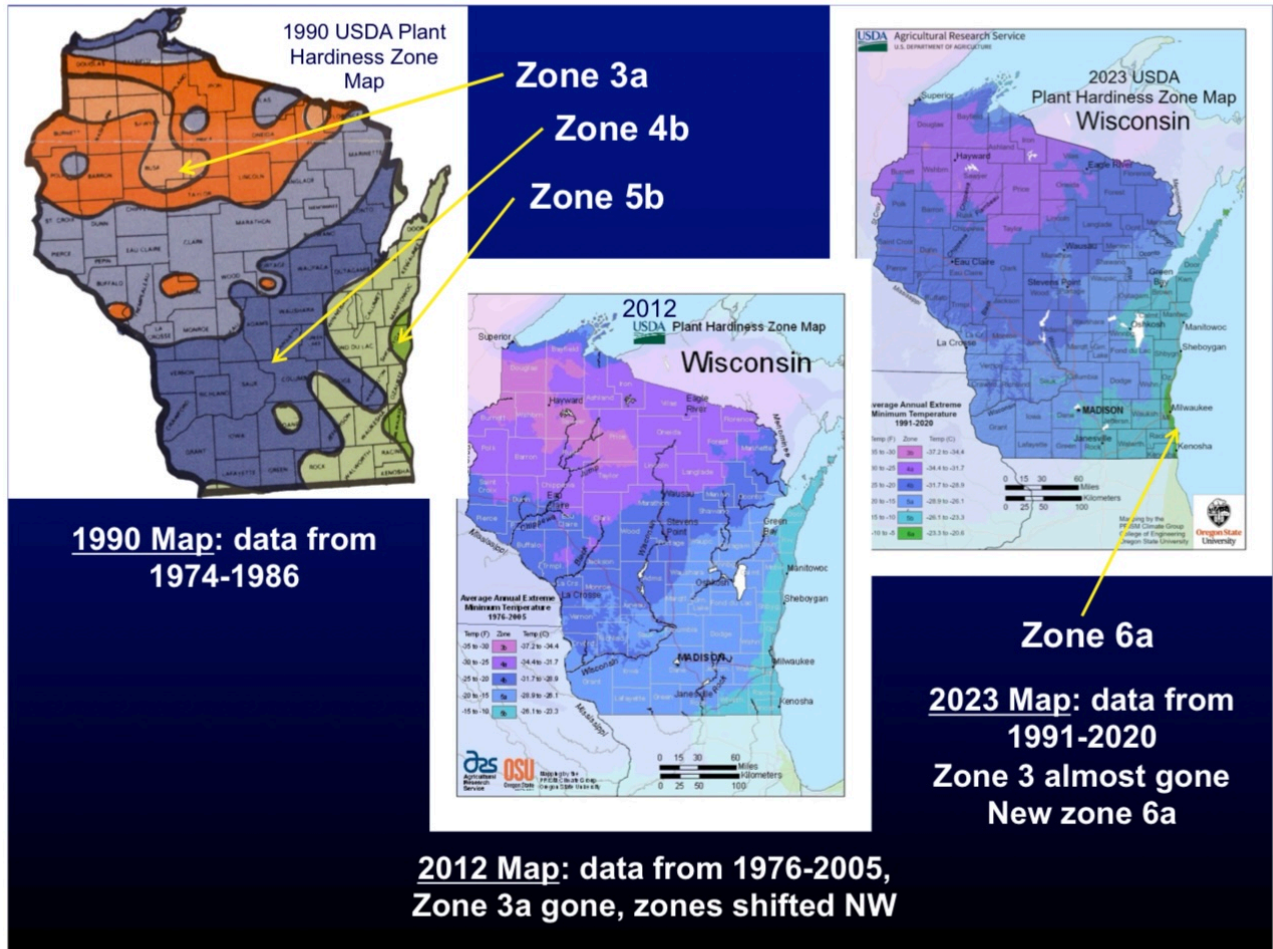
Inviting curved path



# USDA Releases New Plant Hardiness Zone Maps

Are you thinking about purchasing new plants this year? Wisconsin, as well as the rest of the United States, has had changes (warmer) to its hardiness zones. The image below from the UW-Madison and UW-Division of Extension compares Wisconsin hardiness zones over the years. The changes are attributed to warmer temperatures, more accurate mapping techniques and technology, and data from more weather stations. Click the link below the maps for more information.

Thank you to Cathy Lombard for bringing this information to our attention.



Comparison of USDA Plant Cold Hardiness Zone Maps published from 1990, 2012 and 2023

Source: <https://hort.extension.wisc.edu/files/2023/11/New-USDA-Cold-Hardiness-Zone-Map-copy100.pdf>

# ST. CROIX DISTRICT TO HOST THE 2025 WGCF CONVENTION IN EAU CLAIRE

...A News Flash from "Conversations on the Chippewa"

When you attend our Tuesday, June 4th St. Croix District meeting we're hosting in Irvine Park, you'll hear lots about the progress the 2025 Convention Planning committee has made. Be sure to mark April 27-29, 2025 on your calendars as the dates our state convention will be held at the Lismore Hotel in Eau Claire.

Convention leadership team...Barb Barrickman, Sue Wallace and I are the reps from our club. Barb & I are serving as Convention Vice-Chairmen and Sue is Convention Registrar. Other planning committee members are Debby Walters, our District Director & Convention Chairman, and 3 members from Botany Belles and Willow River GC's.

We held 2 Zoom meetings in March and are currently focused on lining up speakers & workshop presenters.

What, when & where..."Conversations on the Chippewa" Sun-Tues, April 27-29, 2025, Lismore Hotel, Eau Claire, WI.

Food...meals include 2 evening banquets, a luncheon and a breakfast.

Meal program speakers...Brent Douglas, Brent Douglas Flowers, Eau Claire has agreed to do our design program at our Monday luncheon and incoming National Garden Club President and the state Bronze award winner will be featured speakers at the Monday evening banquet.

Workshops...we hope to have 8 workshops for you to choose from in 4 time slots. You'll get to pick your 4 favorites to attend. Three workshops booked so far include:

- LWGC member Linda Bergen has agreed to be a workshop presenter
- Learn how to make an attractive arrangement from a grocery store bouquet
- Workout with resistance loop elastic bands so you are "Getting fit for the garden"

Stay tuned for more. We'll keep you posted.

Ginger Wierman, Vice Chairman  
"Conversations on the Chippewa"  
2025 WGCF Convention

## Time for Spongy Moth Treatment Plans

Posted on March 8, 2024

By **Bill McNee, DNR Forest Health Specialist, Oshkosh;**  
**[Bill.McNee@wisconsin.gov](mailto:Bill.McNee@wisconsin.gov) or [920-360-0942](tel:920-360-0942)**



Numerous tan-colored spongy moth egg masses on a bur oak in Walworth County. / **Photo Credit:** Bill McNee, Wisconsin DNR

The Wisconsin Department of Natural Resources (DNR) encourages property owners to examine their trees for spongy moth egg masses and determine whether control measures are needed this spring.

Spongy moths thrive in warm and dry weather. Even if weather conditions are more typical this spring and summer, the current spongy moth outbreak — which defoliated a state-record total of 373,000 acres of woodland last year — will likely continue and spread.

The pest is generally considered established across most of Wisconsin except the western third of the state. High spongy moth populations are most likely to be seen within parts of the [quarantined area](#) but may be present in non-quarantined counties. Looking at [egg mass numbers](#) on a specific property is the best way to determine if there is a potential problem.

Property owners with oak, birch, crabapple, aspen, willow and linden (basswood) trees should be exceptionally watchful because the caterpillars of this invasive insect prefer these species. However, they will feed on many other kinds of trees and shrubs.

To know whether spongy moths are on your property, look for their egg masses. They are tan-colored lumps about the size of a nickel or quarter. Egg masses are typically found on trees, buildings and other outdoor objects. They may also be found inside protected places like firewood piles and birdhouses. Egg masses produced in 2023 will feel firm and appear darker in color than older egg masses, which appear faded, feel spongy and do not contain viable eggs. Egg mass hatch usually begins in mid-to-late April in southern Wisconsin.

Horticultural oil (available from many lawn and garden centers) can be applied when



temperatures are above freezing to prevent the masses from hatching. You can also use a knife, chisel, or similar utensil to scrape unhatched egg masses into a can of soapy water; leave them in the water for a couple of days before disposing of them in the trash.

Insecticide treatments, including foliage sprays and soil and trunk injections, may be a suitable control option after the caterpillars have hatched. A professional treatment is likely needed when there are high numbers of egg masses on large trees. Insecticide treatments are most effective when the caterpillars are small (mid-to-late May in southern counties and late May to early June in northern counties).

When low or moderate numbers of egg masses are present, [physical controls](#) can often be used to reduce pest impacts and make insecticide unnecessary.

Host trees that were heavily defoliated or drought-stressed in 2023 are at a higher risk of dying, especially if they are not protected with insecticide and lose a high percentage of their leaves again this year. Low-vigor oak trees are likely infested by the native beetle [and twolined chestnut borer](#), contributing to tree decline and death. Consult an [arborist](#) or [DNR forester](#) for additional management recommendations.

Planning for insecticide treatments early can ensure trees will be able to receive treatment ahead of a last-minute rush when pesticide application businesses may already be very busy. Resources for finding a qualified pesticide applicator include the [Wisconsin Arborist Association](#), the [International Society of Arboriculture](#), and a local phone book.

Find [additional information on the spongy moth online](#), including egg mass oiling and removal, physical controls and insecticide application.



(Visited 267 times, 1 visits today)

Wisconsin DNR invasive forest insects program coordinator Andrea Diss-Torrance demonstrates scraping a spongy moth egg mass off a tree while making a video on the subject for the DNR. / **Photo Credit:** Wisconsin DNR





**Song of the Trees** by E. M. Dunn  
submitted by Lois Koziol

I am sure a tree must whisper  
To the birds who nestle there;  
Must calm their nervous fluttering  
With its soothing, leafy prayer.

I am sure a thousand green tongues  
Speak within a stately tree,  
Words of comfort to the fledglings  
Until nature sets them free

I am sure each morning hour,  
Just before the break of dawn,  
That the leaves and birds are whispering  
In the trees upon my lawn!

As it ever reaches upward  
To the rain clouds passing by,  
A tree must sing of heaven,  
And the beauties of the sky.

When the leaves are gently rustling,  
Could it be, these kindly words,  
"Come and rest with me a moment,"  
Are being whispered to the birds?

Could there be a hushed communion  
Known alone to birds and trees,  
Wherein God gave them the knowledge  
Of the language of the leaves?

---

**Lake Wissota Garden Club Meeting Minutes**

**March 14, 2024**

Program: Weeds: Menacing or Medicinal, Presenter Kerri Kiernan, Clinical Master Herbalist and Educator

I. Call to order: President Kristen Brown called the meeting to order @7:45

II. Roll call there were 29 members in attendance, introduction of visitors; no visitors

III. Minutes Reading Committee — Thank you to Judy McQuillan, Lois Koziol and Linda Bergen, our February readers. We need 3 volunteers to review this meeting's minutes: Volunteers for March are Linda Bergen, Ginger Wierman, and Gail Fox.

IV. Officers' Reports --- Treasurer Jenn Rolgalski reported: Feb 1-29th 2024 Beginning balance = \$8,596.94, Income = \$2,283.00, Expenses = \$588.81, Ending Balance = \$10,723.39

Note: Budget requests due: Jenn reported she has heard from most of the committees and will be contacting those left.

Annual \$25 dues due: Due before May 1st.

V. Committee/Project Reports

Kristen Brown reported Arbor Day is yet to be finalized, more on that to come.

A. District Meeting June 4th hands-on activity: rustic hypertufa pots: Kristen explained how to create the hypertufa pots and she will be having a workday at her house for making of the pots for the district meeting. About 30 pots will be needed and we will be planting them with succulents at the June 4th District Meeting.

VI. Unfinished Business: nothing to report

VII. New Business

A. Laura Skoff Gardening for Wildlife Award – Susan Wallace gave us an explanation of this new WGCF Award created by President Laura Skoff which is a \$100.00 cash award to be presented to a WGCF member who creates and maintains a wildlife habitat for birds, butterflies and other wildlife in their home landscape. Susan has copies of the award application (asking for details & 3 pictures) that can also be found on the WGCF website under Awards section. Please note the deadline dates for applications on the website.

B. Sign-up sheet for WCGF Meeting (for carpooling to Waukesha): this will be available at next month's meeting. See the newsletter for link to register for the meeting.

Good of the Order

A. March Birthdays: Corinna

B. Barb Barrickman reported on a couple of "pending" items for fundraising. One being a booth at the Lake Hallie Fire Fighters Festival, possible October date, the other being manning the concession stand at Rays beach. More to come as these items develop.

Dates to Remember

A. Next meeting- April 11, All about African Violets (Plus, take a baby violet home!)

C. April 26- Arbor Day

D. May 19-21 Wisconsin Garden Club Federation Annual Meeting, Waukesha

D. June 4- St. Croix District Meeting at Irvine Park

Adjourn: If there is nothing further, the meeting will be adjourned. (No motion needed.)

Submitted by Sue Dove Secretary LWCG